

SURVEYED	D.JAMES	MM/YYYY
DRAWN	S.DRODROLAGI	MM/YYYY
REV	CHANGES MADE	CHECKED BY DATE
0	ORIGINAL	H.BECHU DD/MM/Y

- NOTES:**
- COORDINATES AND BEARINGS ARE IN TERMS OF THE NEW ZEALAND GEODETIC 2000 DATUM BASED ON THE MT EDEN CIRCUIT.
 - THE ORIGIN OF COORDINATES FOR THIS PROJECT IS:
SM 22 SO 100000 LINZ CODE: DCBA
800000.00mN 300000.00mE
 - LEVELS/HEIGHTS ARE IN TERMS OF THE LINZ DATUM "NEW ZEALAND VERTICAL DATUM 2016"
 - THE ORIGIN OF LEVELS FOR THIS PROJECT IS:
SM 22 SO 100000 LINZ CODE: DCBA RL = 25.00m
 - THE BOUNDARIES SHOWN HAVE BEEN PLOTTED USING DATA FROM DP 100000, 200000 & ARE SUBJECT TO FINAL SURVEY
 - STORM WATER, WASTE WATER, AND WATER MAIN SERVICE LINES - DIRECTIONS AND DEPTHS TO BE CONFIRMED BY CONTRACTOR.
 - DRAINAGE PIPE ALIGNMENTS SHOWN ARE ASSUMED AS STRAIGHT LINES BETWEEN SURVEYED MANHOLES.
 - SERVICES INFORMATION OBTAINED FROM COUNCIL RECORDS ARE SHOWN AS (GIS)
 - CONTOUR INTERVAL:
MAJOR: 100m
MINOR: 0.20m
 - MANHOLES ARE NOT TO BE USED AS A DATUM UNLESS STATED OTHERWISE
 - WHERE UNDERGROUND DRAINAGE LOCATIONS HAVE BEEN DERIVED FROM PEGS WHICH HAS BEEN MEASURED AND PROVIDED BY OTHERS TRIG CONSULTANTS TAKE NO RESPONSIBILITY IN THE SERVICE TYPE, SIZES, DIRECTION, LOCATIONS AND DEPTHS PROVIDED BY THE SERVICE LOCATORS.

COPYRIGHT & TCs:
This document and the copyright in this document remain the property of TRIG CONSULTANTS LTD. The contents of this document may not be reproduced either in whole or in part by any means.

Trig Consultants have surveyed site features as specifically requested by the client. The survey was undertaken by trained survey personnel who are not engineers or builders and cannot be expected to identify or interpret all site features. The client is responsible for confirming any additional or critical features with the appropriate professionals. No design work should proceed without consultation with all relevant professionals to verify features shown or not shown on this plan.

This survey reflects site conditions observed during our initial site visit only. We make no representation regarding any changes to site conditions or developments that may occur after that visit. Trig Consultants accepts no liability for changes in site conditions or any reliance on this plan following the date of the initial site visit.

TRIGCONSULTANTS
SURVEYORS | PLANNERS | ENGINEERS
(09)416 4635 | Admin@trigconsultants.co.nz

PROJECT:
101 & 103 EXEMPLAR ROAD
EXAMPLE SUBURB

TITLE:
TOPOGRAPHICAL SURVEY
OF
EXEMPLAR ROAD

RECORD OF TITLE: NA 10/100 & NA 10/101

SCALE 1:200 [A3]

DRAWING C:\USERS\HAMIS\DOWNLOADS		
PATH		
JOB NUMBER	SHEET	REVISION
26000-02	1 of 2	0

INSERT A

SWMH
LL = 27.23 surv

600Ø SW LINE (GIS)
IL 25.19

225Ø SW LINE (GIS)
IL 25.58

600Ø SW LINE
IL 25.21

(SEE INSERT A FOR DETAILS)

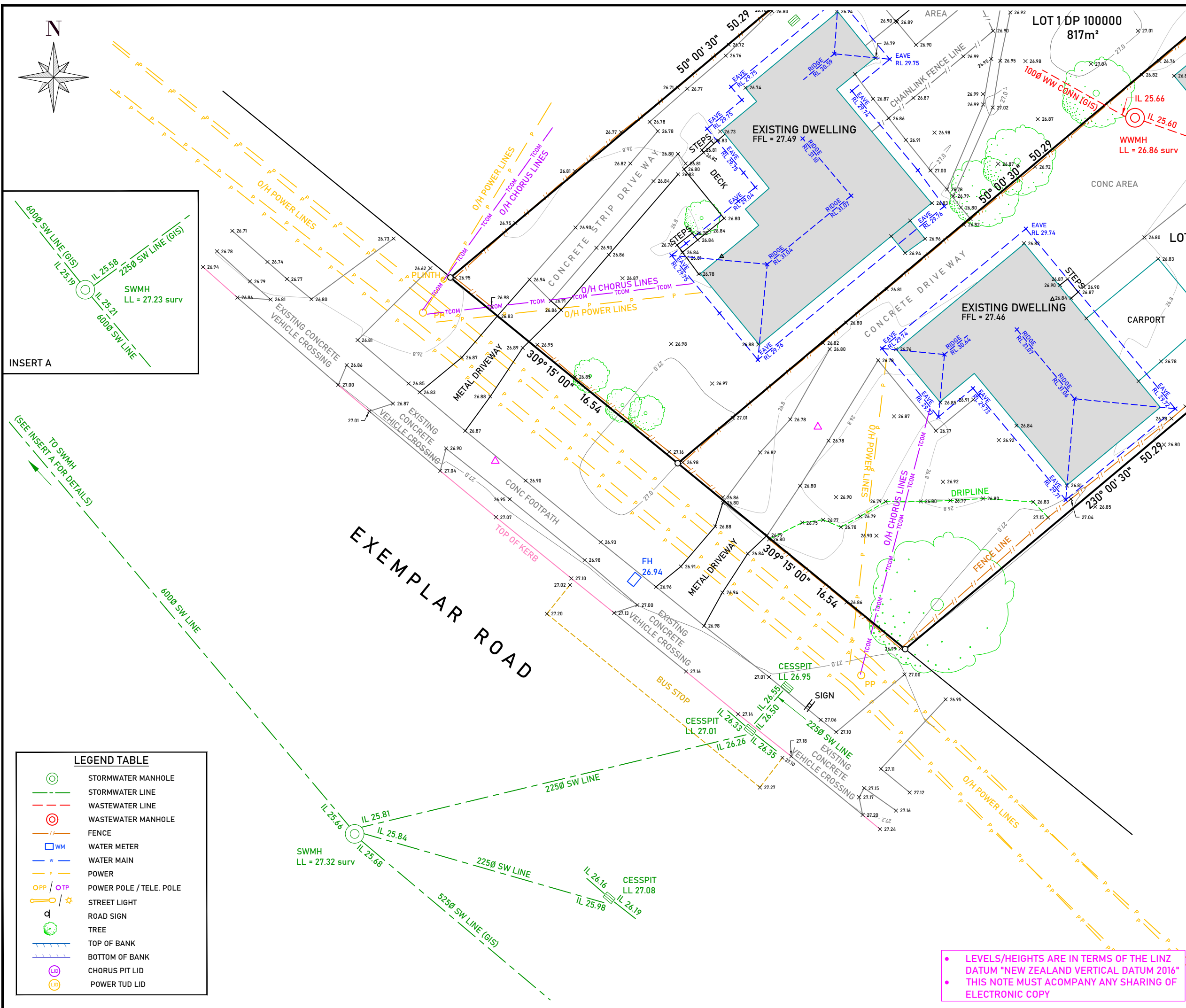
TO SWMH

600Ø SW LINE

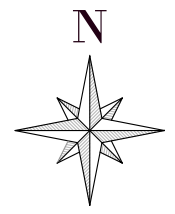
LEGEND TABLE

	STORMWATER MANHOLE
	STORMWATER LINE
	WASTEWATER LINE
	WASTEWATER MANHOLE
	FENCE
	WATER METER
	WATER MAIN
	POWER
	POWER POLE / TELE. POLE
	STREET LIGHT
	ROAD SIGN
	TREE
	TOP OF BANK
	BOTTOM OF BANK
	CHORUS PIT LID
	POWER TUD LID

• LEVELS/HEIGHTS ARE IN TERMS OF THE LINZ DATUM "NEW ZEALAND VERTICAL DATUM 2016"
• THIS NOTE MUST ACCOMPANY ANY SHARING OF ELECTRONIC COPY



LEGEND TABLE	
	STORMWATER MANHOLE
	STORMWATER LINE
	WASTEWATER LINE
	WASTEWATER MANHOLE
	FENCE
	WATER METER
	WATER MAIN
	POWER
	POWER POLE / TELE. POLE
	STREET LIGHT
	ROAD SIGN
	TREE
	TOP OF BANK
	BOTTOM OF BANK
	CHORUS PIT LID
	POWER TUD LID



SURVEYED		D.JAMES		MM/YYYY	
DRAWN		S.DRODROLAGI		MM/YYYY	
REV	CHANGES MADE	CHECKED BY	DATE		
0	ORIGINAL	H.BECHU	DD/MM/Y		

- NOTES:**
- COORDINATES AND BEARINGS ARE IN TERMS OF THE NEW ZEALAND GEODETIC 2000 DATUM BASED ON THE MT EDEN CIRCUIT.
 - THE ORIGIN OF COORDINATES FOR THIS PROJECT IS:
SM 22 50 100000 LINZ CODE: DCBA
800000.00mN 300000.00mE
 - LEVELS/HEIGHTS ARE IN TERMS OF THE LINZ DATUM "NEW ZEALAND VERTICAL DATUM 2016"
 - THE ORIGIN OF LEVELS FOR THIS PROJECT IS:
SM 22 50 100000 LINZ CODE: DCBA RL = 25.00m
 - THE BOUNDARIES SHOWN HAVE BEEN PLOTTED USING DATA FROM DP 100000, 200000 & ARE SUBJECT TO FINAL SURVEY
 - STORM WATER, WASTE WATER, AND WATER MAIN SERVICE LINES - DIRECTIONS AND DEPTHS TO BE CONFIRMED BY CONTRACTOR.
 - DRAINAGE PIPE ALIGNMENTS SHOWN ARE ASSUMED AS STRAIGHT LINES BETWEEN SURVEYED MANHOLES.
 - SERVICES INFORMATION OBTAINED FROM COUNCIL RECORDS ARE SHOWN AS (GIS)
 - CONTOUR INTERVAL:
MAJOR: 100m
MINOR: 0.20m
 - MANHOLES ARE NOT TO BE USED AS A DATUM UNLESS STATED OTHERWISE
 - WHERE UNDERGROUND DRAINAGE LOCATIONS HAVE BEEN DERIVED FROM PEGS WHICH HAS BEEN MEASURED AND PROVIDED BY OTHERS TRIG CONSULTANTS TAKE NO RESPONSIBILITY IN THE SERVICE TYPE, SIZES, DIRECTION, LOCATIONS AND DEPTHS PROVIDED BY THE SERVICE LOCATORS.

COPYRIGHT & TCs:
This document and the copyright in this document remain the property of TRIG CONSULTANTS LTD. The contents of this document may not be reproduced either in whole or in part by any means.

Trig Consultants have surveyed site features as specifically requested by the client. The survey was undertaken by trained survey personnel who are not engineers or builders and cannot be expected to identify or interpret all site features. The client is responsible for confirming any additional or critical features with the appropriate professionals. No design work should proceed without consultation with all relevant professionals to verify features shown or not shown on this plan.

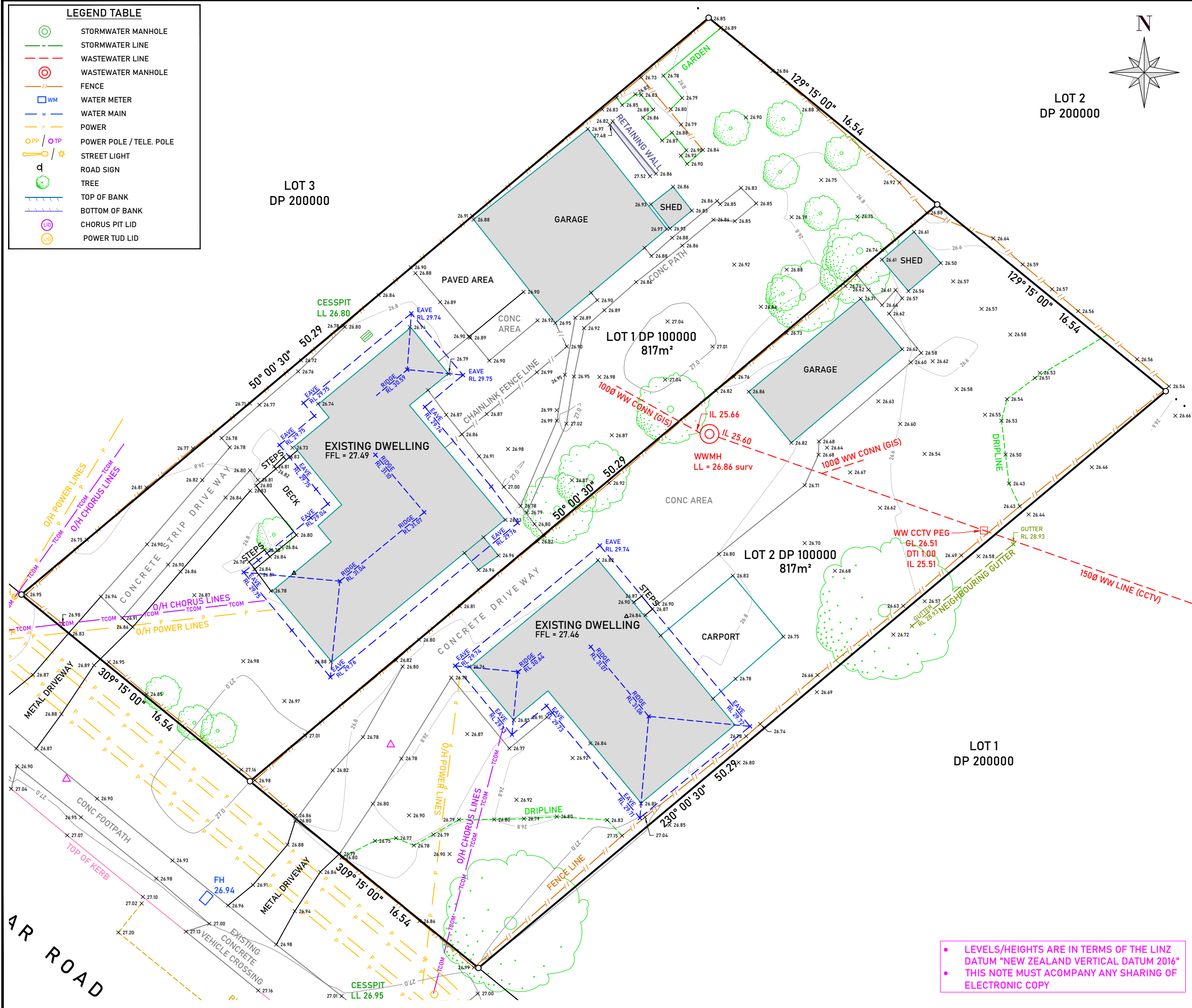
This survey reflects site conditions observed during our initial site visit only. We make no representation regarding any changes to site conditions or developments that may occur after that visit. Trig Consultants accepts no liability for changes in site conditions or any reliance on this plan following the date of the initial site visit.

TRIGCONSULTANTS
SURVEYORS | PLANNERS | ENGINEERS
(09)416 4635 | Admin@trigconsultants.co.nz

PROJECT:
101 & 103 EXEMPLAR ROAD
EXAMPLE SUBURB

TITLE:
TOPOGRAPHICAL SURVEY
OF
LOTS 1 & 2 DP 100000

RECORD OF TITLE:	NA 10/100 & NA 10/101	
SCALE	1:200 [A3]	
DRAWING PATH	C:\USERS\HAMIS\DOWNLOADS	
JOB NUMBER	SHEET	REVISION
26000-02	2 of 2	0



• LEVELS/HEIGHTS ARE IN TERMS OF THE LINZ DATUM "NEW ZEALAND VERTICAL DATUM 2016"
• THIS NOTE MUST ACCOMPANY ANY SHARING OF ELECTRONIC COPY